

1.0 Disassembly:

- 1.1 Remove PR Housing and Cap from Lock, clean and inspect for damage or pitting.
- 1.2 Remove Cap from Housing, clean and inspect for damage or pitting.
- 1.3 Remove End Cap from Prong and remove Back-Up Rings and Vee Packing.
- 1.4 Clean and inspect for damage or pitting.

2.0 Assembly:

- 2.1 Install Cap on Housing.
- 2.2 Install Back-Up Rings and Vee Packing onto Prong Mandrel.
- 2.3 Install End Cap onto Prong Mandrel and tighten.
- 2.4 Install PR Housing onto Lock and tighten.

3.0 Purpose:

- 3.1. To hold pressure from both directions when setting a Lock in a Profile Nipple for Well Control.

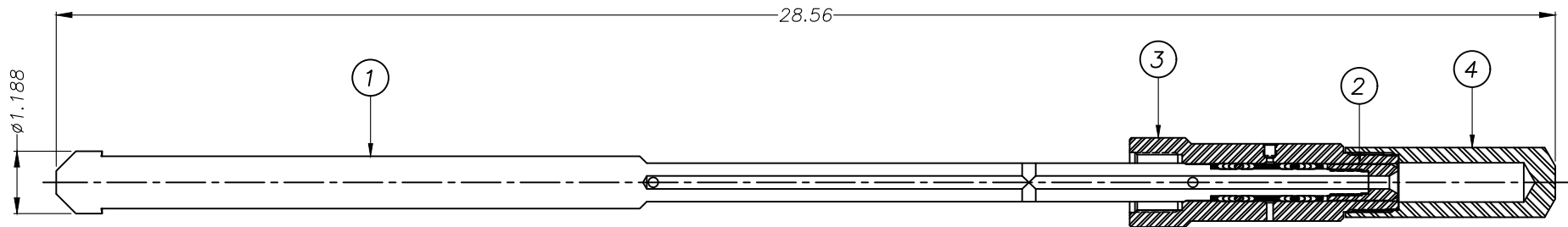
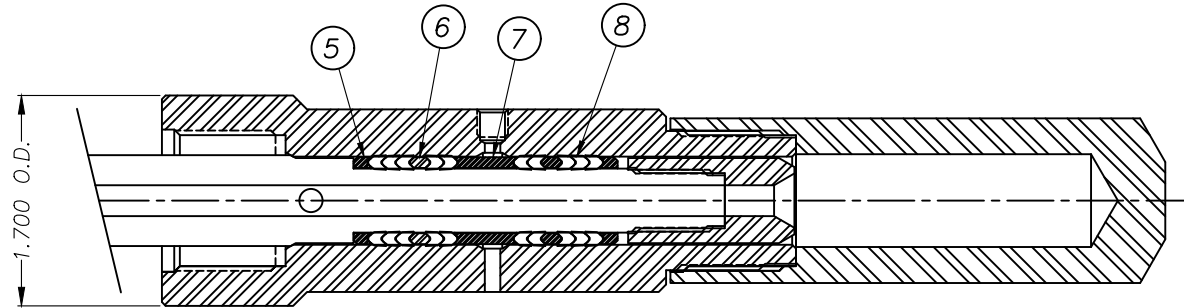
4.0 Description:

- 4.1. PR Equalizing Assembly consists of a Prong Mandrel with Back-Up Rings and Vee Packing that is installed into a PR Equalizing Housing to create a seal against Wellbore Pressure.

5.0 Precautions:

ALWAYS ENSURE THE SEAL BORE IN THE PR HOUSING IS IN GOOD CONDITION WITH NO PITTING OR SCRATCHES AND THAT THE SEAL SURFACE ON THE PRONG WHERE THE VEE PACKING IS LOCATED IS ALSO FREE OF PITTING AND SCRATCHES.

ITEM	QTY	DESCRIPTION	DRAWING/PART No	MATERIAL /REMARKS	ITEM	QTY	DESCRIPTION	DRAWING/PART No	MATERIAL /REMARKS
1	1	PRONG	09-02-PR-171-01	AISI 4140 - L80	5	2	BACKUP RING FEMALE	09-02-BUR-071-01	1026 DOM
2	1	END CAP	09-02-PX-150-04	AISI 4140 - L80	6	2	BACKUP RING MALE	09-02-BUR-071-02	1026 DOM
3	1	HOUSING	09-02-PR-171-03	AISI 4140 - L80	7	1	BACKUP RING DOUBLE FEMALE	09-02-BUR-071-03	1026 DOM
4	1	HOUSING CAP	09-02-PR-171-04	AISI 4140 - L80	8	12	'V' PACKING	09-02-VP-071-01	AS REQUIRED



THIS DOCUMENT IS THE SOLE PROPERTY OF BRACE TOOL INC. IT CONTAINS CONFIDENTIAL AND PROPRIETARY INFORMATION; IT IS DISTRIBUTED WITH THE UNDERSTANDING THAT IT WILL NOT BE REPRODUCED OR USED FOR ANY PURPOSE EXCEPT THE CONFINED FUNCTION WHICH IT IS DISTRIBUTED. UPON DEMAND, THIS DOCUMENT SHALL BE RETURNED TO BRACE TOOL INC.

TOLERANCES
.X = +/-0.03
.XX = +/-0.015
.XXX = +/-0.005
ANGLES = +/-0.5°
CONCENTRICITY .005 TIR



Phone: 780-438-0441 1-800-438-0061

MATERIAL: AS REQ
SCALE: N.T.S. **DATE:** 16 FEB 18 **DWN:** L.M.B.
SHEET: 1 OF 1 **DATE:** 16 FEB 18 **CHK:** C.B.

TITLE 1.71 'PR' EQUALIZING ASSEMBLY
DWG. No.: 09-02-PR-171-A0 **REV.** 0

REV	DATE	DESCRIPTION	BY	ECR